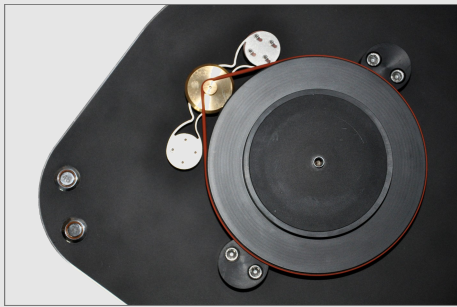


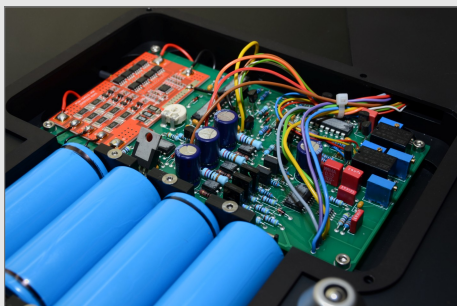
# Thales Turntable

TTT-Compact

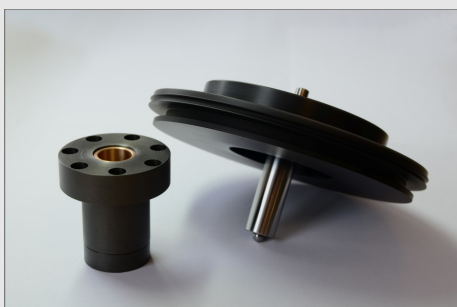




10



11



12

The extraordinary design and performance of our tangential pivoted tonearm SIMPLICITY (which have become world standard), required a fitting turntable. The compact THALES TURNTABLE with battery-drive-system (TTT-Compact) is made to match the SIMPLICITY tonearm perfectly in all aspects: technically, optically and tonally. It provides the most accurate and harmonic sound possible, in a compact and sublime design never seen before.



9

8

7

Based on the experience that a turntable with its tonearm should be one single unit, we have designed our own turntable which is manufactured in our workshop piece by piece and meets highest requirements. We are convinced about the sublime and compact design can provide mechanical stability which could never be reached by a more extensive concept. Each of the 100 parts has been carefully designed to perform its function in the overall concept perfectly.

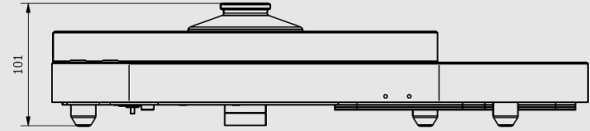
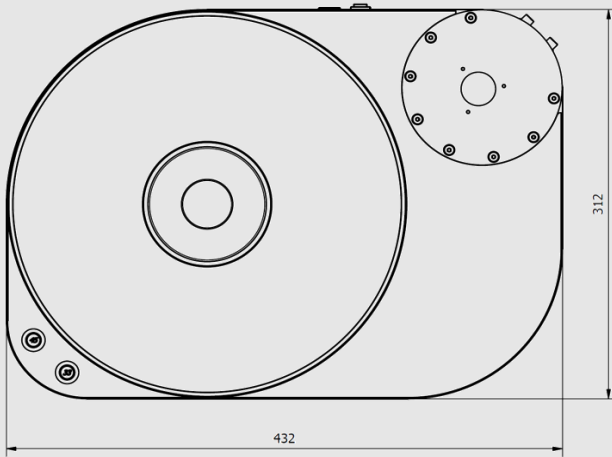


- 1 Connection for charger
- 2 Main-Switch: ON-OFF-CHARGE
- 3 Audio-Outlet: RCA, XLR oder Direct-wiring
- 4 Exchangeable tonearm-base for most tonearms, 9" or 12" available
- 5 Tangential pivoted tonearm Thales Simplicity (recommended)
- 6 Fine-tuning of platter speed
- 7 Operation panel for speed setting and control of the charge condition
- 8 Clamp with highly effective damping inlay
- 9 Immersed platter with high-density inlay
- 10 Short-belt-drive system with motor-suspension
- 11 Battery power source and drive electronics
- 12 Main bearing with hard-chromatized, hand-polished shaft and casted casing, made of spheroidal graphite

6

Our short-belt-drive system connects the moment of inertia of motor and flywheel effective to the main platter. Since the rotary-speed of motor and flywheel is 15x higher, they are very important sonically. This hard coupling has been made possible by a careful calculated spring-element, which keeps all vibration away from the chassis, but does not allow the motor to move axially.

The most modern battery-drive system (peak capacity 1kW) offers more than 16 hours listening without connection to the supply network. The battery will be fully charged within several hours. Together with our ductile-cast-iron bearing, the high density inlay of the platter and the carefully designed spikes, a quality in music playback is reached which let everyone forget about all the technical details.



### Technical Specifications

- 3-phase motor underneath platter
- Short belt drive system with flywheel
- High-precision bearing, hard chrome-plated
- High density mat as platter inlay
- Decoupling ball element feet
- Integrated drive electronics
- Clamp with high density inlay
- Black finish with silver edges

### Turntable Specifications

- Turntable speed: 33 $\frac{1}{3}$  rpm, 45rpm
- Wow and flutter at 33rpm, IEC 386:  $\pm 0,05\%$
- Rumble: -60dB (unweighted)
- Weight: 16kg
- Input voltage for charger: 100-240V, 50-60Hz
- Battery service life: 16h